

Wissahickon Valley

historical society

Ambler
Lower Gwynedd
Whitpain

www.wvalleyhs.org

215-646-6541

P.O. Box 96, Ambler, PA 19002

Volume 15, Issue 11

July 2014

Work continues this summer on the WVHS and HSW merger. Details in August. Since the WVHS doesn't have an official schedule for the summer months, please find below some ideas for local outings for all ages and groups. This is a great time to explore our historic area.

Mark Your Calendar:

July 12 - Garden Tours at Wentz Farm, 10 to 1 (See below for address)

July 15 - Tea and Scones at the Ambler Library - European and American Gardens. 7 p.m.

July 16 - dinner and presentation (historical and financial) at Manufacturers' Country Club. Call James Magaziner (610-505-2347) for details.

July 20 - WVHS Open House, 1 to 4 p.m. Also open are the Franklinville School and Evans-Mumbower Mill.

July 29 - Tea and Scones at the Ambler Library - Wealth of Minerals in Mont. Co. by Jim Johnston. 7 p.m.

August 1 - First Friday in Ambler - 5 to 9 p.m.

August 13 - Montgomery County Samplers - noon brown bag talk - Schwenkfelder Library and Heritage Center, Pennsburg

September 8 - Monthly meeting of WVHS

September 20 - Historical Society of Whitpain's fall antique and plant sale

September 20 - Montgomery County History Fair - 2014 - Heckler Plains Farmstead, 237 Landis Road, Harleysville. Theme: Montgomery County in the Civil War. (WVHS member's ideas and participation needed.)

October 11 - WVHS's annual market day/flea market - 8 to 2

Regular Events for a summer outing:

Farmers' Market in Ambler, Saturday mornings, 8 a.m. to 1 p.m. in the parking lot of TRAX restaurant near the train tracks.

Morgan Log House - 850 Weikel Road, Lansdale - Thurs. through Sat., 11 to 4, Sun., 12 to 3.

Wentz Farm - 2030 Shearer Rd., Lansdale - part of Montgomery Country Park System - Tues. through Sat., 10 to 4, Sun., 1 to 4.

Wissahickon Valley Historical Society www.wvalleyhs.org info@wvalleyhs.org

Serving Lower Gwynedd, Ambler, and Whitpain

Volume 15, Issue 11

On-going Projects:

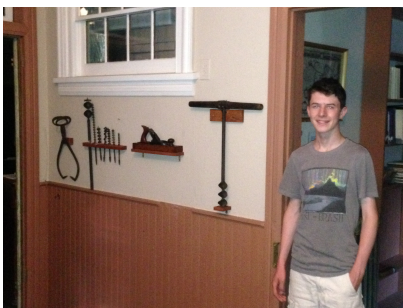
Despite some wickedly hot days, the Thursday crew has put in lots of hours this summer at the 1895 Schoolhouse. We continue to accession new donations, enter our



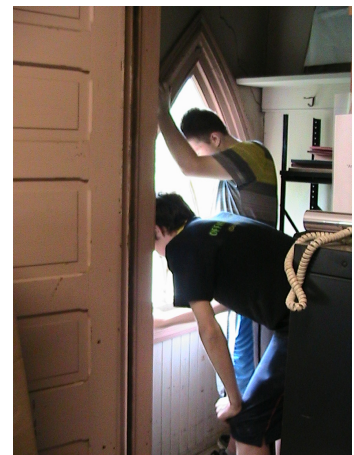
collections on the data base, photograph our collections, clean the building and exhibits, and reassemble our fantastic new library room.

Walker Smith's Eagle Scout project has left the **Henry Conard** Library room in fresh and more useable condition. New shades and bookcases (completed with grants from the **SpringHouse Questers**) made it a safer place for

our collections. Under Walker's direction, the two arches windows were scraped and repainted. All the books, ledgers, and files were carefully moved and are now being cleaned before they are placed on the deeper, more supportive shelves. Walker also built a display unit for part of our Conard tool collection. Again, this makes for a safer, more effective exhibit.



Be sure to visit the library next time you are at the 1895 Schoolhouse. It is a great example of a collaborative project - Scouts, Questers, and WVHS members. Thanks to Walker for coordinating this project.



Whittock Named to Comprehensive Planning Commission

WVHS member **Bob Whittock** will be serving on the Whitpain commission which will update the 2006 plan and will focus on the various villages of Whitpain. They couldn't find a better member!

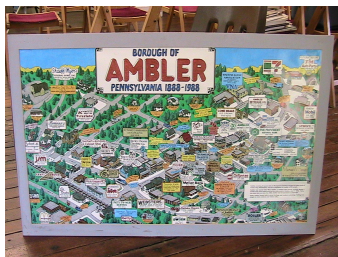
Herb Levy Visits Normandy for D-Day Anniversary

WVHS member **Herb Levy** returned to France in June for the 70th Anniversary of the Normandy Invasion during World War II. Herb was a private with the 9th Engineers during the war and his return visit was at the invitation of the French government and came about after some French students asked to interview veterans who had taken part in the invasion. He first met with students in Washington, D.C. and was then invited to travel to France. He was able to take two guests. Herb took two grandchildren on his trip in June.

Herb and Bill Notley (also a resident of Foulkeways at Gwynedd) attended a number of anniversary-related activities in France. We are hoping that Herb will share some of his adventures and impressions at a WVHS meeting this fall.

In June 22 issue of the Ambler Gazette Herb was quoted as summarizing his week with the following thoughts - "Number one: remember. Number two: which is harder, forgive. and Number three: don't forget the first two because if you don't, we'll go through this all over again." An article about Herb's adventure appeared in Montgomery County publications.

Thanks, Herb, for your service - and for helping us remember.



Recent Donations

From **Joe Schneider**: a poster commemorating the centennial of Ambler. It is an colorful reminder of businesses of the borough in 1988.

From **Bob Whittock**: *The History of St. John Evangelical Lutheran Church - 1769-2014*, a booklet written by Bob from the record books of the church. This is one of several booklets that Bob has written. Others include *History of the Newer Half of Boehm's Church*, *Ladies' Aid Society for the Relief of the Sick and Wounded during the Great Southern Rebellion*, *The Organs of St. John*, and *the Windows of St. John*. Bob has donated copies of each of these publications to WVHS. Many thanks, Bob, for all the research using original sources.

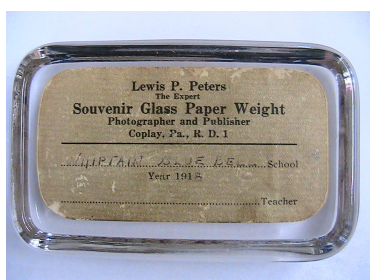
Lindenwold/St. Mary's Info/Updates

The ROSLE group is still working to find alternative plans to the intense development. For updates, please check <http://www.facebook.com/groups/OpenSpaceatLindenwold> or e-mail **MaryLou McFarland** at mimcfarland@heritageconservancy.org.

Interesting Connections

As we sort through materials in the library and museum, we are always finding items of interest - and questions to be answered. In responding to a recent e-mail from the **Haywood family** of Ambler/Lower Gwynedd (now Carlisle, PA), we enjoyed looking at deeds and other documents donated by the family in the past. They are now on display in the museum.

A recent visitor, **Richard Rosen**, brought in an aerial photo signed by "AirPro" of BlueBell, PA. We couldn't find any mention of AirPro in our Wings Field materials. We referred Mr. Rosen to Wings Field and look forward to finding out about AirPro.



At left, both sides of the paperweight brought in by **Brian Adams** which came to him from his grandfather. At right below, a detail showing the teacher - who seems to be Cora Koch who taught at the 1895 Schoolhouse. She is shown at right in a photo in the historical society's collection. Brian's family lived closer to the original Shady Grove school on Lewis Lane. We will be doing

further research on these photos and Ms. Koch.

Brian would also like to know about a "Pigeon Plant" that figures in family stories.



Wissahickon Valley Historical Society
P.O. Box 96
Ambler, PA 19002-0096