

THE
AMCHEM
NEWS

Vol. 8 No. 3

Nov., 1965



AM-Gems

Beware the fury of a patient man.

—John Dryden

Delusions, errors and lies are like huge, gaudy vessels, the rafters of which are rotten and worm-eaten, and those who embark in them are fated to be shipwrecked.

—Buddha

Economy is a great revenue.

—John Ray

An appeaser is one who feeds a crocodile—hoping it will eat him last.

—Winston Churchill

The man who graduates today and stops learning tomorrow is uneducated the day after.

—Newton D. Baker

I criticize by creation, not by finding fault.

—Cicero

A failure is a man who has blundered, but is not able to cash in the experience.

—Elbert Hubbard

Every man is entitled to his own opinion, but no man has a right to be wrong in his facts.

—Bernard M. Baruch

The crab grass always looks browner on the other side of the fence.

—George Gardner (Amchem)

Nothing contributes so much to the prosperity and happiness of a country as high profits.

—David Ricardo

The only birds that talk are parrots, and they don't fly very high.

—Wilbur Wright

On Our Cover

To the Amchem golfer of 1965, the big day was Saturday, Sept. 25, and the place to be on that day was the Montgomeryville, Pa., Country Club. This date and place marked the initial Amchem League Golf Tournament. Two of its most enthusiastic participants appear on our cover: Jim Thirsk (l.) and Ed Rodzewich. Jim has always been a prime motivator in the promotion of the links game at Amchem and was the captain of Amchem's first golf team. More about the tournament on pages 8 and 9.

THE AMCHEM NEWS

Vol. 8, No. 3 November, 1965

Published by

AMCHEM PRODUCTS, Inc.

Ambler, Pennsylvania

in the Interest of AMCHEM
Employees and Their Families

William A. Drislane, Editor-Art Director

A message on PROGRESS PROFITS and PROSPECTS from the Chairman



AS OF THIS WRITING indications are that our sales will surpass the record set last year and hence make the year 1965 the greatest in Amchem's history. What is even more important is the fact that these sales will result in greater profits. And while these rising profits will properly result in larger dividends to the stockholders who risk their money, not over 40% of this year's earnings will go to them. The balance will be plowed back into the business for expansion, modernization and diversification.

Plans have been put into motion to acquire at an early date a new plant located in Clinton, Iowa for the production of 20 million pounds of Granular Amiben per year. We are also negotiating for the purchase of a plant adjacent to our present factory in Ferndale, Michigan to take care of additional production requirements there.

To grow and to be able to meet ever-present competition, an increase in research personnel and an expansion of facilities is a necessity. With this in mind, we are now constructing a new building at the Agricultural Research Farm in Springhouse. This move will enable us to unite the Agricultural Research Group so that these researchers will have immediate access to experimental areas and the greenhouses. In addition to laboratory and growth chambers the new building will contain ten offices, a library and a conference room.

In conjunction with our Metalworking Chemicals Research Program, and in order to continue our pre-eminent role as a supplier to the pre-painted coil industry we will, in January 1966, put into operation a nine-stage continuous pre-treatment line at the Ambler plant. This new laboratory tool—a unique installation—will enable us to demonstrate recent and, I hope, future Amchem developments to prospective customers.

TO RETURN to the subject of profits, I would like to point out that rising profits mean better working facilities for our employees as well as better jobs and improvements in so-called fringe benefits. In connection with the latter, beginning January 1, 1966 the Company will pay 100% of the Blue Cross/Blue Shield premiums for dependents of employees, as well as for the employees themselves.

The major steps in Amchem's growth and the continual increase in employee benefits are the result of the Free Enterprise System under which we live. Its appeal is very aptly expressed in the following quotation:—

"We have developed in the United States the best kind of system in the world. It's a system in which labor wants the employer to make more money and we want to make more money. The American system is like a pie. There's a slice for everyone. The more money industry makes, the more we make. I like this kind

Continued on page 16

New COMPUTER

Will Accelerate Accounting Procedure



WHEN WE INFORM our readers that the Accounting Department is going to have an IBM 1440 Computer System installed in December, it should recall *THE DESK SET* to those who had seen this comedy on the stage or screen. But these viewers needn't expect the 1440 to meet with the same fate as the machine in the play . . . and we don't think the installation will introduce any romantic angle either.

Why the installation of the 1440? Well, Amchem's business activities have reached the point where speed, combined with accuracy, is a daily requirement in processing an ever-increasing variety and amount of data. In other words, the Company was faced with new dimensions in calculation . . . and in the minds of Amchem management, the only way to cope with the situation would be to install a computer system that would perform a diversified number of tasks. These include order writing, billing, recording accounts receivable and payable, calculating payroll, making analyses of sales, and quickly providing answers to other questions involving computation.

The IBM 1440 is a replacement for the automated IBM accounting machine that was originally installed ten years ago. This machine was essentially a tabulator and had its limitations, while the 1440 is a one hundred per cent computer system.

What is a Computer?

According to the IBM people, a computer is an electronic machine that rapidly and accurately executes instructions given to it by a person . . . and contrary to popular concept, it is not

an "electronic brain" that's capable of running itself. Its purpose is to offer man a means to increase his productivity. It in no way minimizes the essentiality and importance of man and isn't considered a substitute for his inherent skills. Rather, it is a tool that enables him to do more work in less time and achieve superior results.

A COMPUTER SYSTEM consists of several pieces of equipment, each having a different function. Basically, these are: Input of information, calculation (processing), temporary storage, and output of results. The input may be commercial, scientific, statistical, engineering, etc. Processing is carried out in a pre-established sequence of instructions that are followed automatically by the computer and the plan of processing is of human origin.

The "human origin" at Amchem is Paul W. (Walt) Smucker, whose official title is Programmer. Walt is currently devising several series of programs to meet the computation demands of the various facets of the Company's operations. The most urgent need of the moment appears to be the posting of accounts receivable within a specified time limit that would permit the mailing of the monthly statements on time. To achieve this end, Walt has formulated an initial program that will be put into effect as soon as the installation is completed. The past-due sales analysis and sales report program is also receiving a priority.

Presenting data to the computer system is similar in many ways to communicating with another person by letter. The letter contains a written message

which is transported to and read by the recipient. Similarly, communications for a computer system are translated by the programmer into a set of symbols that can be read and interpreted by the data processing machines. These symbols establish a language for communication between people (the programmers) and machines (computers). This symbolic information can be recorded on several different kinds of media, including punched cards, paper tape, magnetic tape, magnetic disk, etc.

The programs that Smucker is currently designing are for punched cards and will utilize the card sorting equipment from the original, 10-year-old installation. After the cards have been code-punched, fed to the input machine, and processed, the requested information will have been computed and printed on continuous form paper. The findings will then be turned over to the sources from which the requests came.

JIM DRAKELEY, who has been "operations officer" in the IBM Room since 1957, will continue to be in charge of data processing. Jim will also continue to be assisted by Janet Harper and newcomer Ruth Jekot. Basic information regarding orders and prices will be furnished by Tony Varsaci and his group, while Sam Caterisano, Office Manager, will direct the entire computer project.

P. S. About that romantic angle mentioned in the first paragraph? We're not too sure now; come to think of it Jim Drakeley's one of the few eligible bachelors left at Amchem.

ICI... Amchem's Largest Manufacturing Associate

THE MOST satisfying and stimulating incident connected with the preparation of this article for the NEWS was the dispatch with which Mr. D. S. Graham, Personnel Services Officer, Paints Division, I.C.I., responded to a request for background information on this particular Division.

I.C.I. is a ready-recall abbreviation for Imperial Chemical Industries Limited, whose Paints Division is headquartered in Slough, Bucks, England. The "Bucks" is also a quick "handle" for the more colorful, but cumbersome, Buckinghamshire—shire being equivalent to county.

This is a rather circumlocutory introduction to a most important Division of the second largest chemical company in the world, and Amchem's biggest Metalworking Chemicals Manufacturing Associate.

SOME IDEA of the size of I.C.I. can be ascertained when we learn that its Paints Division alone employs

over 4,500 and has three factories in the United Kingdom: One in Slough, one in Stowmarket, and one in Glasgow, Scotland. In addition, a very close liaison exists between I.C.I. Paints Division and associated paint manufacturers in Canada, South Africa, Australia, New Zealand and India. I.C.I. Paints Products are stocked by agents throughout Europe and the Middle East, North Africa, the Far East, and Central and South America. (Amchem pre-paint metalworking chemicals are manufactured and distributed by other Amchem associates in these areas.)

Amchem's association with I.C.I. Paints Division dates back to 1925 when Mr. Alexander Quig of Nobel Industries Ltd., visited a number of United States automobile manufacturers and found that they were using Amchem's (then the American Chemical Paint Company) Deoxidine®, the first pre-paint chemical that cleaned steel, removed oil, acid, grease, rust and hand marks, and also produced a

chemical conversion coating that acted as a rust-retardant and as a paint-bonding agent on the steel.

Imperial Chemical Industries Formed

In the following year, 1926, Nobel Industries Ltd. was one of four large chemical companies in England which merged to form Imperial Chemical Industries Limited. Nobel had been well established in the paint business since 1907, the year that it acquired the New Explosives Co., Ltd., as a subsidiary. This name was later changed to Necol Industrial Collodions Ltd. This firm made industrial finishes from nitrocellulose. Another acquisition by Nobel was the Frederick Crane Chemical Co. Ltd. which was taken over completely in 1924.

A company called Nobel Chemical Finishes, jointly owned by Necol Industrial Collodions and du Pont, was formed to market the new 'Belco' finishes to the British automobile trade.

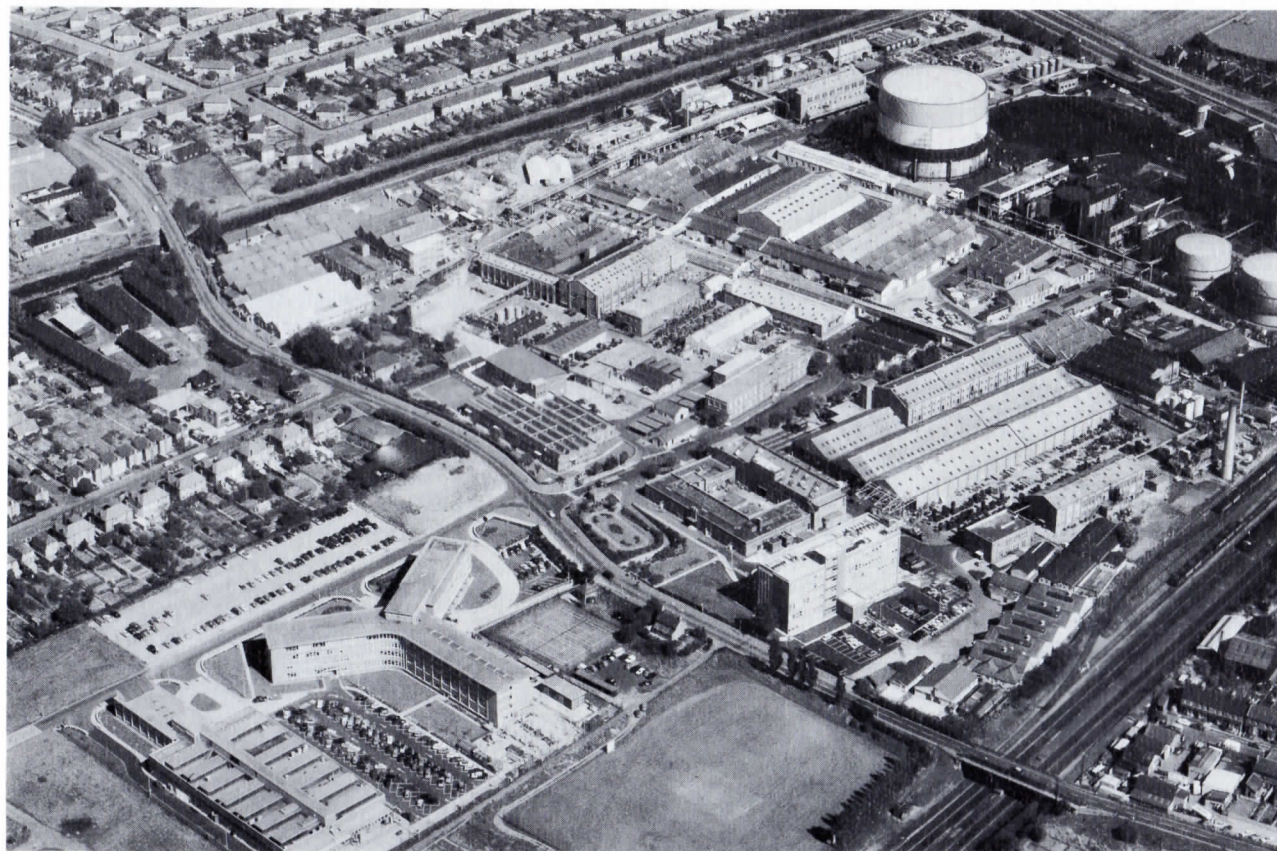
It was at this juncture that Mr. Quig saw the necessity for using Deoxidine in conjunction with the application of the new finishes, for, as Mr. Graham relates, "Chemical cleaning by Deoxidine was absolutely essential to ensure durability of the paint film as opposed to the physical hand-cleaning methods previously used."

Licensing Agreement Established with Amchem

During his American visit, Mr. Quig met Amchem's founder, the late Mr. Harvey Gravell. The meeting resulted in the appointment of Nobel Chemical Finishes as successor to Mr. Bernard C. Taylor as agent in the United Kingdom for Deoxidine, after arrangements had been made with Mr. Taylor for the transfer.

At the time of the establishment of a definite licensing agreement in 1930, the Nobel officers were Mr. Quig, Managing Director; and Dr. H. H. Morgan, Chief Chemist; and Mr. T. Cartwright,

Continued on page 10



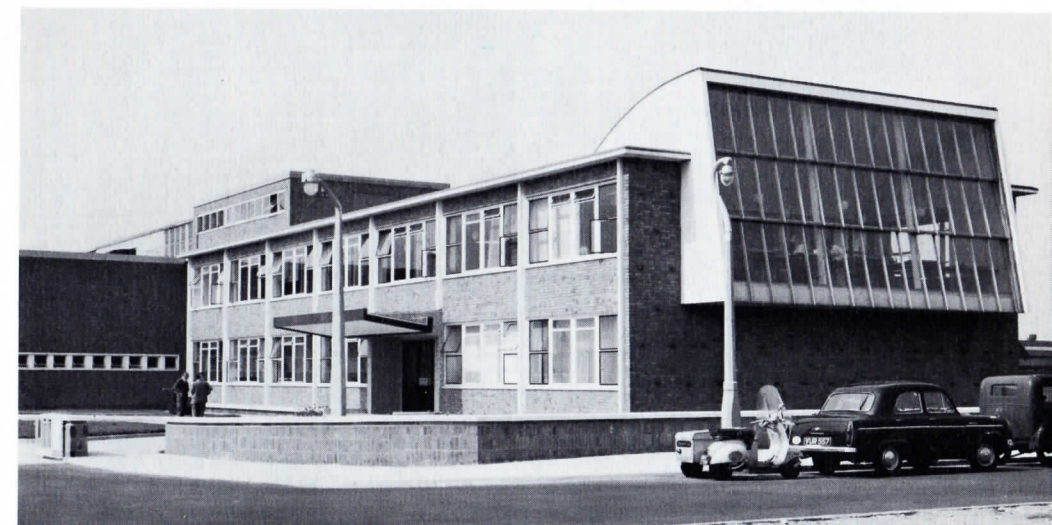
Aerial view of Imperial Chemical Industries Limited, Paints Division Headquarters, Slough, Bucks, England.



Technicians working on adhesion and corrosion-resistance systems.



Courses in car refinishing are given for I.C.I. customer personnel.



Modern facilities of Paints Division Technical Service Department.

WEED CONTROL FIELD DAYS

DRAWING on his many years of service as Botanist and Plant Pathologist for the State of Iowa, and also on his findings after an intensive coverage of over 80 farm meetings this past Spring in his native State, Dr. E. P. Sylvester was well prepared to impart a fund of knowledge to his listeners at Amchem's Eighth Annual Weed Control Field Day, July 8, at the Research Farm.

Dr. Sylvester was guest speaker following the mid-day luncheon. The title of his talk was "What the Farmer Needs in Weed Control." He told his audience that in 1935 there were approximately 225,000 farms of five acres or more in Iowa, while today this number has dropped off to 180,000; and that farming is losing out to industry in the labor market—a well known fact.

Getting into areas of specific interest to his Weed Field Day listeners, Dr. Sylvester said that most of the poor results reported by some users of herbicides were due to misapplication—particularly where users neglected to follow the manufacturers' recommendations.

In his talk, Dr. Sylvester gave seven rules to follow in regard to the application of farm chemicals. These are: (1) Read the instructions on the label and follow them carefully. (2) Never leave a sprayer unattended while it is being filled, because chemicals could be siphoned back to the well. (3) Always wear goggles, masks and respirators—

and don't smoke. (4) Destroy empty containers. (5) Separate storage areas for insecticides in order to avoid mistaken identity. (6) Calibrate all instruments used in the application of chemicals at least twice a year. (7) Buy your farm chemicals from a reliable dealer.

Dr. Sylvester presented a series of colored slides showing the disastrous results of misapplication—including using wrong chemicals, overdoses, poor timing, etc. He stated that the modern farmer is anxious to learn and is not averse to using chemicals.

In addition to his fluency, Dr. Sylvester tossed in a few jokes pertinent to the particular situation or circumstance he was referring to.

This year's Field Day was one of the best patronized since the establishment of this Amchem event in 1958. Close to 200 people attended, including guests from as far away as Colorado.

The program followed the format which has proved to be successful in preceding years, with the formation of the guests into two groups in order that everyone could get closer to the various trial plots and hear the project leaders explain the purpose and the results obtained in the experiments in the approximately 760 plots. The weather being ideal, the visitation to the plots proceeded speedily. In the event of rain, an alternate program had been arranged for indoors.

Amchem executives were introduced at the luncheon by Director of ACD Research and Development Bob Beatty, and research personnel by Anson Cooke, Director of Biological Research.

The dispatch and efficiency with which the various Weed Control Field Days are carried out each year are a tribute to the organizational ability of the ACD Research Staff—including the Farm personnel and members of the clerical force.

Amchem Inaugurates Canadian Weed Control Field Day

July 12, 1965, was an auspicious day for Amchem's ACD Research Department for it marked, to our knowledge, the first Weed Control Field Day ever sponsored by an American commercial enterprise in Canada.

The event, sponsored by Amchem and programmed by John Kirch, Assistant Director of ACD Research, was held on the Merlin, Ont. farm of Alfred Williams, father of Neil Williams, ACD Sales Representative for Eastern Canada.

John and Neil started the experimental plots on the Williams' farm on last May 16. Work continued throughout the summer and resulted in the cultivation of over 400 plots. By Weed Control Field Day the plots had shown sufficient development to permit the studying of total vegetation, of new

Dr. Sylvester Stresses Importance of Proper Herbicide Application... Amchem Sponsors First Canadian Weed Control Field Day

compounds on crops and the demonstration of new formulations on corn and soybeans.

Invitations to the Field Day were confined to those engaged in agricultural chemical research at Canadian colleges and universities. There were no attendants from commercial agencies.

Kirch informs us that the purpose for establishing the Canadian Research Farm is to afford ACD Research Personnel the opportunity of observing new compounds for weed and brush control under different soil and climatic conditions from those existing at our Ambler Research Farm. And it enables Canadian weed control scientists to study how these formulations work in the Canadian environment.

As Professor George Jones, Head of Field Crops, University of Guelph, Ont., told Kirch, "I can save a year by looking at your plots here in Canada and seeing how the results might be applied to Canadian weed control problems."

With a major portion of Canada's far-flung acreage devoted to farming, it is easily conceivable how the establishment of Weed Control Field Days can stimulate a wide interest among Canadian weed control experts and help develop a market for Amiben, Vegiben and the other successful members of the Weedone line of farm chemicals that continue to keep Amchem "The First Name in Weedkillers."



(Above) Canadian Weed Field Day "Charter Members" (top row l. to r.): Mrs. Alfred Williams, Alfred Williams—parents of ACD Sales Representative Neil Williams; Dr. Clayton Switzer, Dept. of Botany, University of Guelph, Guelph, Ont.; John Kirch, Amchem, Dr. John Bandeen, Dept. of Field Crops, University of Guelph; Dr. Rudy Brown, Western Ontario Agricultural College, Ridgetown, Ont.; Richard Frank, graduate student, University of Guelph. Front row: Neil Williams with daughter Dawn and son Dean (wife Maureen was busy preparing refreshments, according to Kirch). Stan McLane, Amchem, Prof. Geo. Jones, Head of Field Crops, University of Guelph.

Veteran ACD Research personnel participating in day's activities are (l. to r.): Jake Landis, Consultant Joe Leaper, Russ Bishop, Stan McLane.



Latest developments in experimental turf plots are explained by Dick Otten to interested group of guests.



(Below) Ralph Kauffman (foreground), explains effectiveness of various compounds in brush control area at Weed Control Field Day held at Amchem's Research Farm, Ambler.



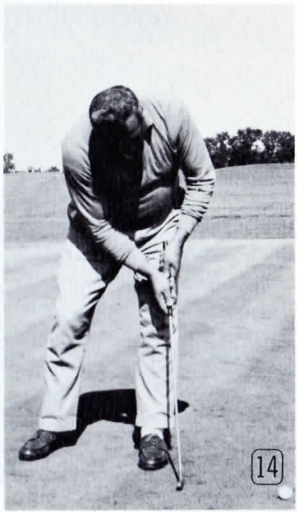
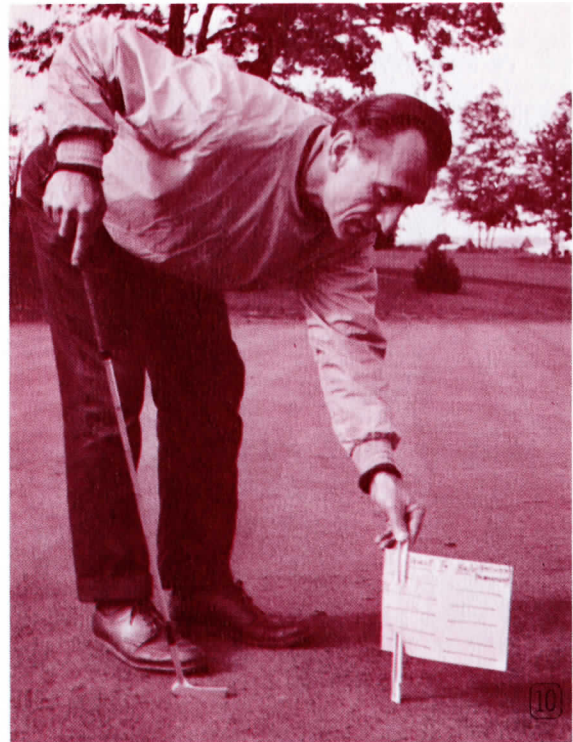
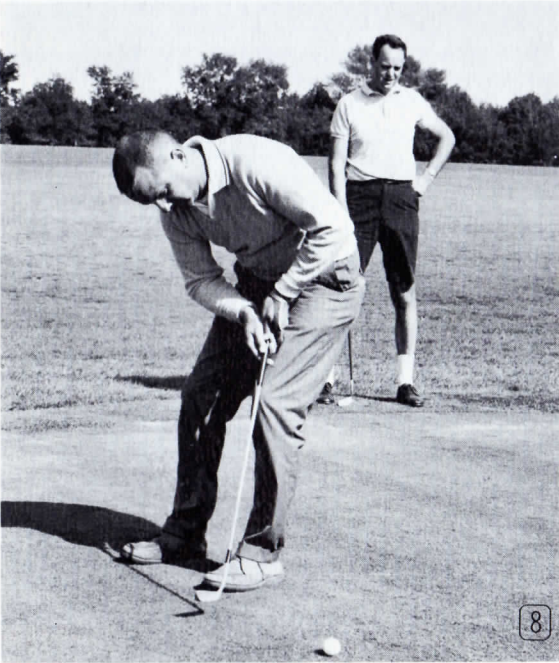
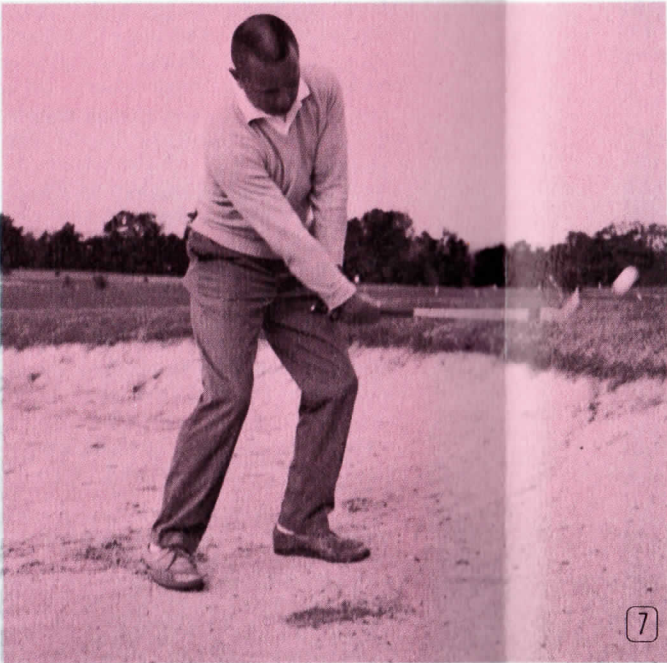
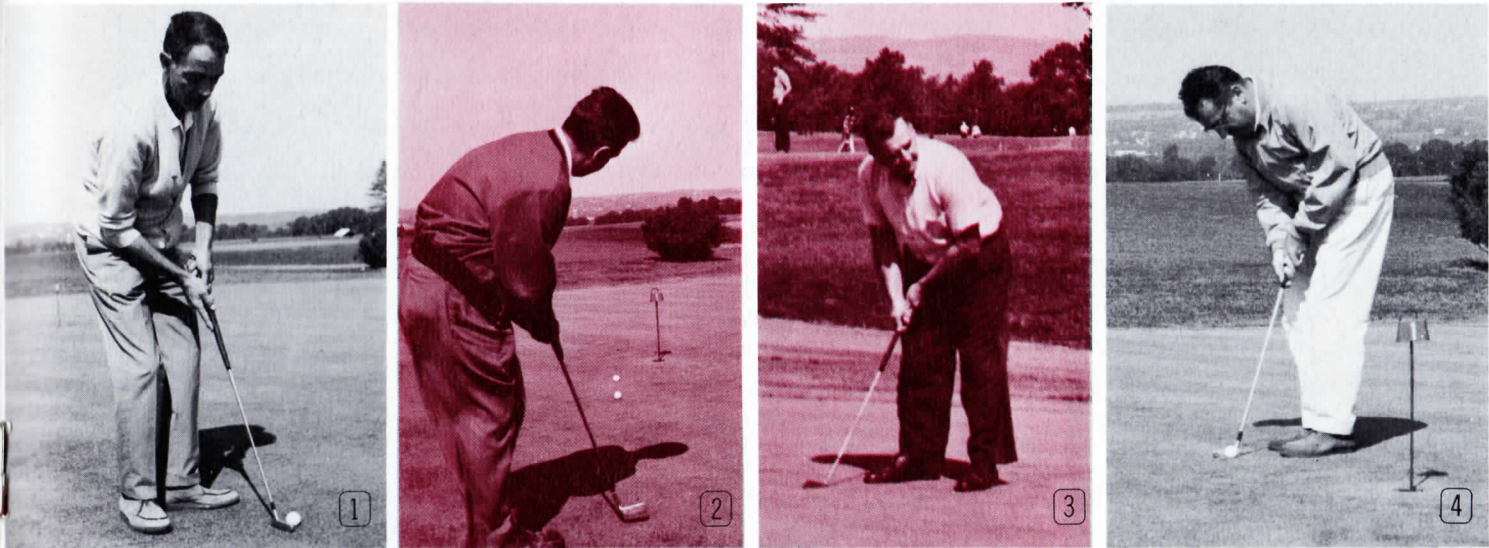
MANCINI BROTHERS AND RALPH LELII CAPTURE **GOLF TOURNAMENT** HONORS

Gabe Posts Lowest Net, Joe Wins Nearest-to-Pin, Lelii Has Longest Drive

JOE MANCINI came within two strokes of being a double first-prize winner in the Amchem Golf Tournament played over the 18-hole, Montgomery C.C. course, Montgomeryville, Pa., September 25. Joe had to be satisfied with a first and a tie for second, although he posted an excellent 74 for lowest gross over the rough terrain of the par-70 course on a clear but blustery day. With his four-stroke handicap Joe's net was 70, one stroke above his brother Gabe who had a respectable 82 but the benefit of a 13-stroke handi-

cap for a net of 69. Joe's handicap of four was the lowest of all competitors but his net of 70 only tied him for second place with Frank McFadden, who had a gross of 97 but was favored by a 27 stroke handicap. Joe copped the closest-to-pin prize when he landed just 24 feet from the cup on the 145-yard, par three, 11th hole. Ralph Lelii had the longest drive—a terrific 331 yarder on the 385-yard 9th hole. Dick Otten, who had the second lowest handicap—9, carded a very creditable gross 80 to tie for second place with Tom Rogers, both having a net of 71. Tom's gross was 91 and handicap 20.

Fourth place ended in a four-way tie between George Stewart, gross 94-19; Max Zebich, gross 99-24; John Kirch, gross 100-25; and Paul Tomlinson, gross 108-33—all posting nets of 75. In addition to the Mancinis and Dick Otten, other low handicaps were assigned to Al Serratore—a 10, and Ralph Lelii a 12. Serratore finished fifth with a net of 76; Ralph was sixth, posting a net of 77. Other finishers and their scores were: Merv Hubbard, 94-16 for 78; Ed Rodzewich, 97-19 for 78; Joe Rocco, 94-15 for 79; Wally Dragani 98-19 for 79; Walt Krogh, 94-14 for 80; George Brumbaugh, 112-32 for 80; Jim Thirsk 103-21 for 82; and Jim Roberto 107-24 for 83.



Pre-match practice on the putting green (1) Tony Serratore. (2) Ralph Lelii. (3) Max Zebich. (4) Wally Dragani. (5) Checking clubs on arrival at Montgomeryville are: l. to r. Ralph Lelii, Joe Rocco, Wally Dragani. (6) (7) (8) A Dick Otten sequence: Teeing off, blasting out of sand trap, sinking putt. (9) Hauling clubs after long drive is Merv Hubbard. (10) Nearest-to-hole winner Joe Mancini plants card. (11) Studying plan to get out of sand trap is John Curran. (12) Tom Rogers teeing off first hole. (13) Practice swing is taken by John Kirch. (14) Gabe Mancini nudges ball towards cup. (15) Greens fees are paid by John Kirch (r.) to low-score winner Gabe Mancini.

ICI—Continued from page 5

Technical Director. Personnel then numbered about 300 compared to the 4,500 today, as previously mentioned. In the meantime, another company had been acquired, the old-established varnish firm of Naylor Brothers Ltd., London.

Rapid Growth

Further years of expansion followed the formation of I.C.I. in 1926: The British Paint and Lacquer Co. Ltd., was purchased in 1935. In 1940, du Pont sold its interest in Nobel Chemical Finishes to I.C.I. Later acquisitions were Blacklock & Macarthur Ltd., in 1943; and Nobles & Hoare Ltd., in 1944. It was in the latter year that Nobel Chemical Finishes changed its name to Paints Division, Imperial Chemical Industries Ltd., thus "blending together a strong tradition of technical leadership with long experience of paint manufacture in all its various forms," according to this excerpt from I.C.I.'s "The Story of Paints Division."

There is scarcely a domestic, industrial, or military area in the United Kingdom, as well as in many places

abroad, where I.C.I. Paints Division products haven't penetrated. In the Metal Pretreatment field alone I.C.I. markets 94 different products to meet a wide diversification of requirements. Of these 94 products, the largest percentage are Amchem licensed, the most widely marketed being Granodine®, which has been doing an outstanding job for Britain's renowned automobile trade (see AMCHEM NEWS, April, 1964). In its laboratories at Slough, I.C.I. chemists have done extensive research work in the metalworking pretreatment field and have developed a number of ancillary products and processes. These include Serseal® and Kephos® which Amchem manufactures and markets here in the United States. Both of these products are also manufactured and sold outside England and the United States through sub-licensing agreements between Amchem and its associates in various overseas countries.

Executives of I.C.I. Paints Division

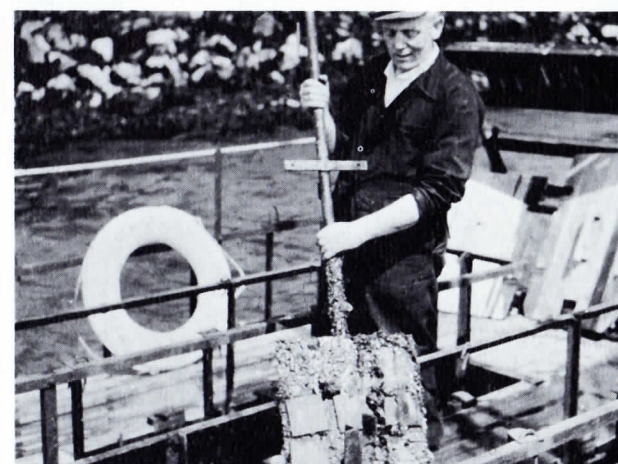
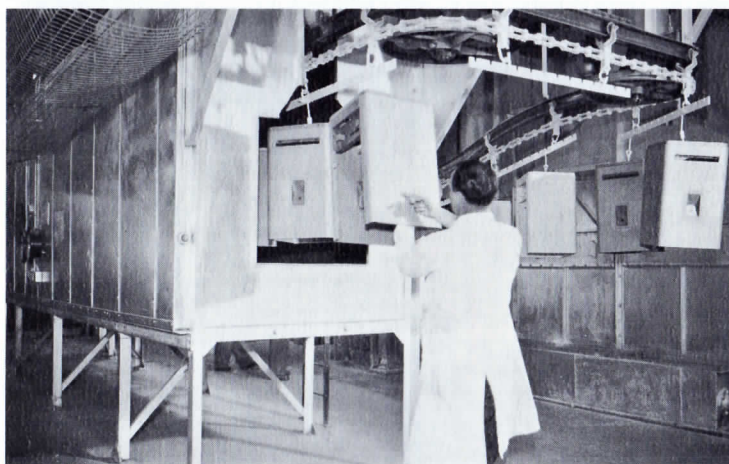
Of I.C.I. Paints Division executive personnel, Mr. Norman E. Cooper and Mr. Richard E. Shaw are best known to Amchem's International Division,

which had the pleasure of meeting Mr. Cooper over 30 years ago at the first International Convention in Paris. It was just a few years later that Amchem met and established a long and cordial association with the highly, technically qualified Mr. Shaw.

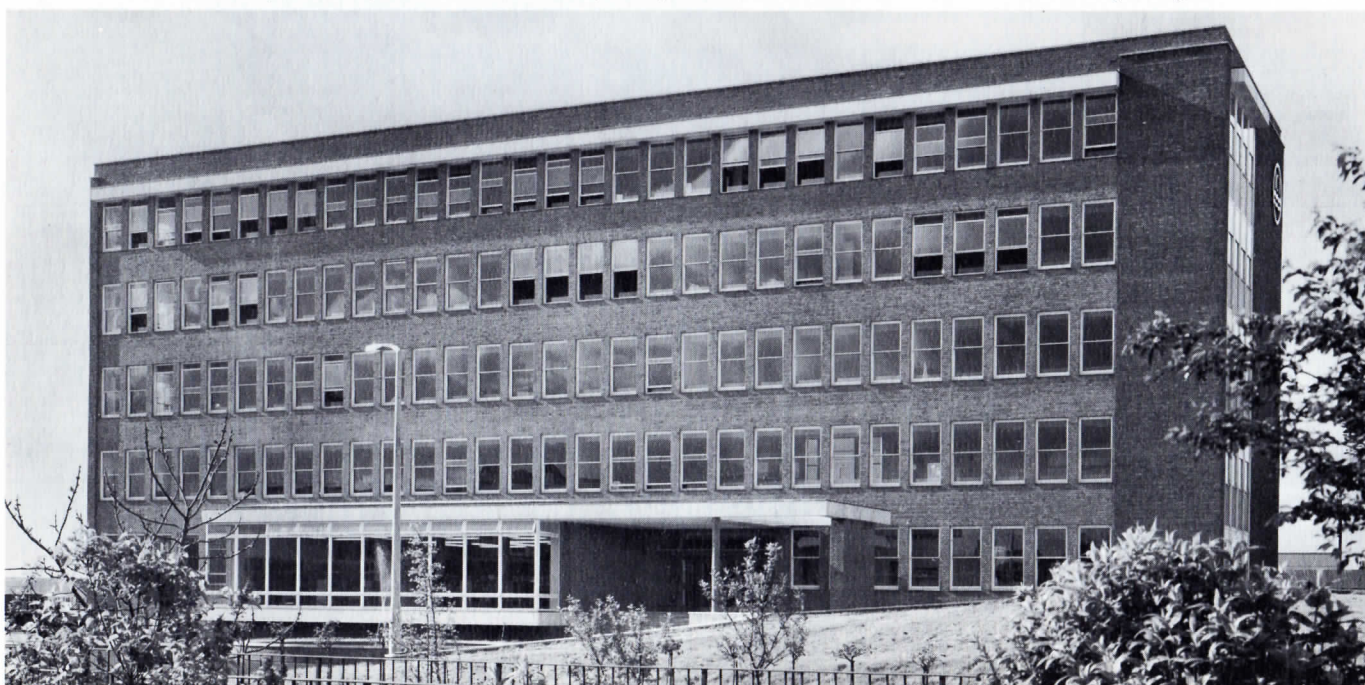
The destinies of I.C.I. Paints Division are in the very capable hands of the following members of the Directorate: Chairman—Mr. J. D. Rose; Joint Managing Directors—Messrs. P. F. Overbury, H. A. D. Perry, E. F. Brookman; Directors—Messrs. S. Coppins, A. G. Pollard, B. G. Walker, G. M. Henderson, G. Costly, F. J. Hillebrandt, C. I. Snow.

In addition to Mr. Cooper and Mr. Shaw, the directors most closely associated with and directly responsible for the overall success of the Metal Pretreatment products are Mr. Rose and Drs. Brookman and Henderson.

Amchem is well aware of its long and happy association with I.C.I. and is proud and grateful for having had the opportunity of contributing in some degree to the success of the Paints Division of this fine, overseas industrial affiliate.



(Above l.) Washing machine cabinets leave Granodine®M plant at Hoover Ltd. (Above r.) Painted test panels lifted out of the sea at Brixham. (Below) I.C.I. Paints Division Research Laboratories, Slough.



Construction and ACD Production Tie for Safety Rate Performance Honors



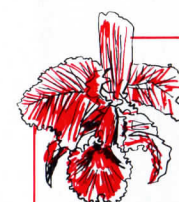
Construction Department—a repeater, having tied with Maintenance last year. Back Row: (l. to r.) Johnny Zollo, Bob Wright, John Farzetta, Andy Lawrence, John Pistilli. Front Row: (l. to r.) Frank Piacitelli, Frank Pulli, Bill Pistilli, Tony Serratore, Harvey Burrell.



ACD Production—from seventh last year. Back Row: (l. to r.) Frank Markley, Tom Ryan, Shirley North. Front Row: (l. to r.) Andy Mayersky, Joe Alba, Tony Bruno, Mel Nagle.



Big Day: This happy young couple is David Lawrence Neilson, and Margery Beth Wiegand. David is the son of Howard F. Neilson, MCD-Ferndale, and Mrs. Neilson. Margery Beth is the daughter of Mrs. Arlington J. Wiegand and the late Mr. Wiegand. Picture was taken after wedding on July 17, at Drayton Avenue Presbyterian Church, Ferndale. The newlyweds honeymooned in the Poconos. Dave is in his senior year at Albion (Mich.) College (see Amchem News, July 1965). Margie is continuing to teach school.



Orchids

A note to Hugh Gehman from Myron Johnson, MCD Sales Rep., Mid-West Dist. pays a high compliment to John Curran, MCD Research.

Johnson's letter states in part: "Dear Hugh, I would like to thank you for your generosity with John Curran this past year by offering his unlimited help

at Philco plants in Connerville.

"Those problems experienced seem to be solved and we are getting good work now from both plants. . . . When it comes to giving credit for holding the account for more than a year now; I would like to put John Curran's name at the top of the list. In my opinion, he is one of 'Amchem's best!'"

Another "Orchid" comes from W. Olson, Chief Metallurgist, Atwood Vacuum Machine Co., Rockford, Ill., lauding Eric Binns, MCD Research,

for his technical help. Mr. Olson says: "I feel that Eric Binns deserves a word of commendation in regard to his efforts in developing the black supplementary coating over zinc phosphate. His courteous and unassuming manner and his cooperative attitude made his visit with us both pleasant and profitable.

"And while I'm passing out compliments, the above goes for our contacts with all of you Amchem people."

(Ed has since returned to college.)



Dick Sherwood, son of Frank Sherwood, is kneeling at right foreground.

Frank Sherwood's Son Plunks a Mean Guitar

"When the 'Lynchmen' from Edina combined a rhythm lead and bass guitar with sounds from a baritone and tenor sax, then added drums spiced with a 'canary', they were 'Coming On Strong', long before Don Skoglund wrote and arranged the song."

This is not a quote from *DOWN BEAT*, but the opening paragraph of a feature article in the *EDINA* (Minn.) *COURIER* on a group of teen-age musicians who are gaining something of a reputation as purveyors of the kind of sound that induces modern head-to-foot movement, with the most pronounced action occurring somewhere in between. These paint-mixer semi-grays, as practiced by the Oliver-Twist-pants crowd and their female counterparts, go under such names of dubious origin as Hully Gully, Monkey, Frug, Hitchhiker, Watusi, Dog, Swim and A Go-Go dances.

Edina is a suburb of Minneapolis, with a population of 35,000. Thus the "Lynchmen" prove that more than cereal is produced in this section of the "Gopher State."

The headline of this piece is a dead giveaway of our interest in this musical aggregation. Frank Sherwood, ACD Sales Manager, Mid-Western District, who has been with Amchem for almost 20 years, is the father of bass guitarist Dick Sherwood.

Frank relates that Dick is 18 years old and stands six feet, one-and-a-half inches tall. Two of the group are at-

tending Mankato (Minn.) State College and the rest attend Edina High School—they also plan on going to college.

Between rehearsals, engagements, school and study, Dick is a salesman in a men's apparel shop which has become a common meeting ground for this musical outfit.

"The group labels itself a rock-and-roll band, but covers the high school, college and country club set," which by way of inference, the *COURIER* means that they occasionally have to go in for "schmaltz" as well as "go-go," attesting to their versatility.

Dad Frank Sherwood says: "They are all fairly solid citizens and the band is their hobby. It also helps them to make a few dollars—and that is an important factor to most of them."

At the rate they're going they should be making more than "a few dollars," for Dan Skoglund, lead guitar and arranger wrote four songs. These were grooved out by the bunch this past May. We have no details on the success of the platter but we're rooting for the "Lynchmen" to do as well as another group from a neighboring State to the West that started out similarly a few years ago. "Yez, folks, you know whom I mean . . . a one, an' two, an' . . . aren't 'doze' LYNCHMEN 'wonderful!'"

Service Award PRESENTATIONS Made Earlier This Year



Ken Kramer (r.) receives 10-year award from Leo Damskey (l.) . . . MCD Sales



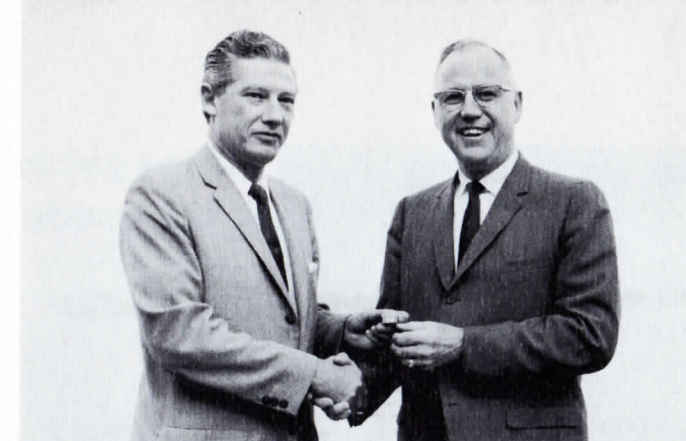
Merv Derrick (l.) recipient of 5 year award; Hal Wendorf (r.) presenting . . . Fremont.



Ed Sickel (r.) accepting 5 year award; Leo Damskey presenting (l.). MCD Sales.



Dick Bailey (C) receives 25-year service awards of solid gold watch and diamond pin from F. P. Spruance, Sr. (L) and Pres. Romig.



Howard Neilson (R) receives diamond service award from Jack Price. MCD Ferndale



Tony Bruno (R) accepts 20-year diamond service award from Frank Boland. AC Prod.



Bill Coleman (R) receives 20-year diamond service award from Adolf Karcher. MCD Mfg.



Bill Gannon (L) is recipient of 20-year diamond service award from Al Douty. Patent Dept.

Congratulations!

These are the men and women of AMCHEM who have received Service Award Emblems between July 1, and October 1, 1965.

JULY

Richard O. Bailey
William Dalton
William J. Neill
Harvey P. Raman

William Coleman
Kenneth W. Dunster
Marion O'Neill
Okie Stecki

AUGUST

Robert Breininger
Bernard J. Cole

Anthony Bruno
Leo C. Damskey

SEPTEMBER

Stanley Dembski
Edwin H. Feather

Robert W. Gannon



Leo Damskey (R) accepts 15-year service ruby award from F. P. Spruance, Jr. MCD Ferndale



Bill Dalton (R) accepts ruby award from Ray Neilson. MCD Ferndale



Stan Dembski (L) receives five-year service award from Bill Dalton. MCD Ferndale



Harvey Raman (R) accepts 10-year service award from Russ Bishop. ACD Research



Ken Dunster (L) receives five-year service award from Bob Beatty. ACD Research



Ed Feather (L) accepts five-year service award from Gene Snyder. Purchasing



Bill Neill (R) receives five-year service award from Geo. Schneider. Pilot Plant



Marion O'Neill receives five-year service award from Geo. Russell. Engineering



Okie Stecki accepts five-year service award from Harlo Beals. Windsor



Gene Snyder Elected an Amchem Vice President

Gene Snyder, who will be 25 years with Amchem next July 1, was elected a Vice President of the Company at the quarterly meeting of the Board of Directors September 7, according to an announcement of Pres. Romig.

Gene has been Director of Purchasing since 1955, and will continue in this capacity. His present title is Vice President-Director of Purchasing.

Gene is an honor graduate of the University of Pennsylvania with a degree in chemical engineering. His career with Amchem began in the Metalworking Chemicals Division laboratories, where, in addition to research projects, he worked in the field as technical adviser to the MCD Sales force.

Gene is also responsible for Amchem's wool-scouring and bottle-washing chemicals operations. He is Chairman of the Company's pricing committee and performs special jobs and assignments for President Romig.

Gene lives at 305 Bok Road, Wyncote, with his wife, Norma and three children; Paul 13, Laurie 11, Michael 3.

Dutch Harmon Retires at Windsor Plant

George D. (Dutch) Harmon retired July 31, after almost 18 years at Amchem's Windsor, Ont. Plant. At the time of his retirement he was Plant Superintendent.

George joined Amchem, November 1, 1947, just about the time the new Windsor Plant was built. He and a subordinate were the sole employees of the plant at that time. Today there are eight.

"Dutch's" fellow-workers joined in a farewell dinner for him at the Canton Restaurant, Windsor, August 5, and presented him with a UHF television adapter.

A rabid sports fan, he will now be able to view the numerous sports events televised in the Detroit-Windsor area. "Dutch" also reports he plans to do some gardening and perhaps a little travelling.

Lineguard® Installations Produce Savings, Up-grade Quality for Auto Manufacturers

A recent *NEW PRODUCTS RELEASE* from Ells Stockbower, Manager, New Product Sales, reports that Amchem's Lineguard® installation using Granodine® 18, at GM's BOP assembly plant (now called GM's Assembly Division) in Wilmington, Delaware, has been in operation seven months and the tabulation of cost records for the first five of these seven months shows chemical savings are a little over 20 per cent for combined body and sheet metal line when compared with the previous twelve-month average.

At GM's Chevrolet Plant at Flint, Michigan, savings for the three-month period are about 10 per cent when compared with the five previous months. This operation uses Granodine 21-C. GM also has a Lineguard installation at its Framingham, Mass., Chevrolet Plant, also utilizing Granodine 21-C, and is highly pleased with results.

Fisher Body's No. 2 Plant at Flint and the Chevrolet Plant in Baltimore are presently installing Lineguard No. 8000 Sets. Other encouraging news for prospective Lineguard operations has emanated from GM's Chevrolet Plant in Tarrytown, N. Y., Ford Motor's, Wixom, Michigan Plant, and Chrysler's St. Louis Plant.

While this particular savings factor is of vital importance to automobile manufacturers, the primary function of a Lineguard installation is the assurance to the manufacturer of a consistent rust-proofing and paint-bonding operation through automatic control of the chemical content in the baths.

When many companies are devising ways to squeeze additional dollars for their products from their customers, Amchem still seeks ways to assist its clientele in effecting savings and at the same time maintain optimum quality of their product — this is real service.

Granodine® Seminar at Studebaker, Canada

Service Refresher Program conducted by George Brumbaugh at the Studebaker Plant, Hamilton, Ont., Sept. 14, for MCD Canadian Dist. Sales Personnel. George is Director of Quality Control and Engineering Services. (l. to r.) John Gray, Harlo Beals, Dick Mitchell, John Thomas, Brumbaugh, Eric Grayston, Paul Tomlinson (Ambler).



The Welcome Mat Is Out—and Up!



Good for you, Les! The best we ever got was a shake from the tomato-stained hand of Mike, the proprietor of the local pizzeria. Les Hartwig is an ACD Sales Rep., Southern District. This particular Holiday Inn is in Brunswick, Ga. and is patronized by Les when he is calling on customers in that area. Les, a Penn State alumnus, lives in Tallahassee, Fla.

MCD Midwest District Sales Meeting, June 6-8, St. Clair, Mich.



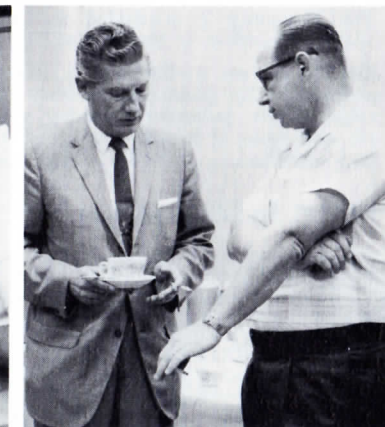
Partial view of one of the sessions at the three-day seminar.



(l. to r.) Ed Maine, John Pierce, Don Van Ittersum and Cliff Hunt.



(l. to r.) E. Krueger, D. Rakish, R. Meech, W. Schneider.



Jack Price (l.) and Bob Meech.



Tom McCarthy (l.), Bob Cavanaugh.

Along the Party Line

Wedding Belles and Beaux: DON NEILL, ACD Research Lab took the big step Sept. 11, at Huntingdon Valley (Pa.) Presbyterian Church. Don's life partner is Barbara Golcher, Huntingdon Valley, who is employed as an IBM controller at Insurance Company of North America. Attendance at the ceremony numbered approximately 230. Best man was big brother Bill, Amchem Pilot Plant, who also gave the traditional toast at the reception held in the Knights of Columbus Hall, Glenside. The father of Don and Bill, William H. Neill is also employed in MCD Research.

MARY ANN GLYMP, Inventory, made a name switch to Mrs. Harry Harp on September 4, at a Nuptial Mass formal wedding in St. Anthony's Church, Ambler. Reception followed at the Springhouse Hotel, Springhouse, Pa. Bridegroom is a senior in Villanova University School of Engineering. The happy couple reside at Spring Garden Apts. just one block from Amchem.

Heirs to Illness: HELEN SKELTON hos-

pitalized in August is back in Accounting looking well and feeling well. FRANK BOLAND was a subject for the surgeon's skill this past summer. He, too, has been back in harness for several weeks and looking good as ever. BILL GANNON again in the hospital as a result of the leg injury he sustained last winter. WALTER KROGH submitted to successful surgery in October.

Basketeers: Tom and Mike Wilson, sons of EARL WILSON, Amchem Night Force, had a ball—a basketball—in their mitts many evenings this past summer as members of the winning (15-1) Sheeleigh Playground team in the Watertown Summer Basketball League.

Rostrum-and-Water Glass Circuit: JOHN GEYER, Tech. Asst. to Pres. Romig, gave learned spiel to Galvanizers Committee, Wheeling, W. Va., Oct. 8, on "Finishing of Hot Dip Galvanized." Conducted

seminar on "Effect of Government Specifications on Building Products." Chicago, Oct. 11. Conducted technical session on "New Paints and Laminates for All Metal Strip Processing Lines," National Coil Coaters Ass'n Meeting, Chicago, Oct. 13-15, of which he was Vice Chairman.

Diaper Data: DOLLY DEL POPOLO, comely ex-tenant of the Drakeley Den, presented her husband Pete with an eight-pound, nine-ounce bundle of joy, Sept. 30. Baby's name is Christine.

Returnees: WALT DUDLIK, formerly of ACD Lab now assigned to MCD Research. Retiree JOE LEAPER as part-time consultant, ACD Lab. Also, Ph.D. candidate HARRY LEISTER, who took a few weeks respite from teaching-studying chores at Drexel, to work in one of the MCD Labs this past summer. BETSY YOUNG to Acct'g after a couple of years at University of Maryland.

Introducing New Members of the Amchem Stork Club

BRIAN R. SAWYER, July 12, 1965
Father: George Sawyer (ACD Sales)

KEVIN EUGENE FOX, July 22, 1965
Father: Gene Fox (ACD Research Lab)

JULIE AMANDA JOHNSON
... August 3, 1965
Father: Roy Johnson (ACD Research)

KIMBERLEY ANN HERNANDEZ
... August 16, 1965
Father: Frank Hernandez (Production—St. Joseph)

RAYMOND PATRICK
HERNANDEZ, JR., September 1, 1965
Father: Raymond Hernandez (Production—St. Joseph)

ANN LILES PAGE, September 4, 1965
Father: Don Page (Int'l Div.)

ANN LOWRY SASSE, September 7, 1965
Father: Stig Sasse (Int'l Div.)

KURT DAVID KRUEGER
... September 12, 1965
Father: Ed Krueger (MCD Sales)

MICHELE JANE DALRYMPLE
... September 15, 1965
Father: Robert J. Dalrymple (Pilot Plant)

Welcome to Our New Employees

(Not previously listed in The NEWS)

NAME	HOME TOWN	ASSIGNED TO
HOWARD R. BAUMANN	Fort Lee, N.J.	Ag. Sales, Lawn and Garden
JAMES H. BLOMQUIST	Ft. Washington, Pa.	MCD, R & D
SHARON S. CAMPBELL	St. Joseph, Mo.	St. Joseph, Office
RICHARD A. CHATTIN	Bangor, Pa.	Ag. Sales, Lawn and Garden
PEGGY A. CRESSMAN	Lansdale, Pa.	Purchasing
WALTER R. DUDLIK	Margate, N.J.	MCD Research
LOUIS B. HIRST, JR.	Collingswood, N.J.	MCD Research
CHARLES C. KNIGHT	Haverford, Pa.	Ag. Research Farm
MORTON A. MILNE	Jenkintown, Pa.	Ag. Research
BARBARA A. NICHOLS	Ambler, Pa.	Publications
RONALD L. NOLAN	Ferndale, Mich.	Ferndale Plant
DONALD J. NUSS	Lansdale, Pa.	Maintenance
PETER E. SPANGLER	Wyncote, Pa.	Ag. Research
LINDA J. SPARANGO	Ft. Washington, Pa.	Patent
JAMES R. TINDALL	Plymouth Meeting, Pa.	Maintenance
RUTH E. VAN GAASBEEK	Lansdale, Pa.	International

MESSAGE—Continued from page 2

of a system."

The foregoing is attributed to George Meany, President of the AFL-CIO.

But this system, as fine as it is, does not automatically guarantee success. This takes people dedicated to doing a good job and going at it with a sense of vigor and confidence. It takes "idea men",

working in harmony and cooperating with other employees to bring into being new products, preferably basic and covered by patents; people who will not be satisfied with anything less than excellence in the production, sale and servicing of these products. We now have many such employees and as the Company grows I am sure we will have the need for many more.

In Memoriam



Latest photo of Mr. Breininger (r.) as he received solid gold watch and 25-year diamond service award from Pres. Romig, Aug. 5. Plant Manager Smith is at left.

Robert H. Breininger

It is with deep regret that we announce the death of Robert H. Breininger, ACD Production Superintendent, Sunday, Oct. 10, in All Saints Hospital, Chestnut Hill, Philadelphia, where he had been hospitalized for several weeks. Mr. Breininger had completed 25 years' service with Amchem, August 5. He began his Amchem career as a Chemical Operator, advancing to Production Supervisor, and in 1955 he was appointed Production Superintendent. Prior to his association with Amchem he had been in the retail food business.

Mr. Breininger was born in Ambler 58 years ago. He was a graduate of Taylor Business College, Philadelphia.

At the time of his death he lived at Ivy Lane and Welsh Rd., Lansdale.

The funeral was held, Oct. 13, with Solemn Requiem Mass in St. Stanislaus Church, Lansdale, Pa., of which he was a member. Burial was in the cemetery adjoining the church.

Surviving are Mr. Breininger's wife, Marion; two daughters, Kathryn at home and Mrs. Eugene Early, Norristown; four brothers: Carl, New York; Frank, Toms River, N.J.; Jerry, California; Fred, Florida; a sister, Catherine Breininger, Florida.

Elton K. Garritt

Paul S. Harton

We also regret to announce the death

of two Amchem retirees: Elton K. (Pete) Garritt and Paul S. Harton. Mr. Garritt died in his home, Bristol Rd., Ivyland, Pa., August 5, 1965. Mr. Harton also passed away in his home, Tennis Ave., Ambler, October 6, 1965.

Mr. Garritt retired January 3, 1962, after almost 10 years' employment in the MCD Pilot Plant. He was a former resident of Ambler. Surviving are his wife, Marie; son, Herbert; two daughters, Mrs. James Meyers and Mrs. Robert Crouthamel; six grandchildren; three sisters and a brother. Funeral services were held at the Davis Funeral Home, Ambler. Interment was in Whitmarsh Memorial Park.

Mr. Harton was on Amchem's night Security Force from March 1949 until his retirement in April, 1955. Surviving Mr. Harton are his wife, Edna; a son, David; a daughter, Mrs. Max Goettner and seven grandchildren. The funeral was held from the Davis Funeral Home, Ambler, followed by a Requiem Mass at St. Anthony's Church, Ambler. Interment was in Holy Sepulchre Cemetery.

Condolences

We wish to express our sympathy to the following fellow-employees on the recent deaths of immediate members of their families: Dwight Buczkowski, MCD Engineering Group; Stanley Clayton, Maintenance; Helen Heath, Purchasing; Jean Palermo, MCD Sales—whose fathers have died; to Gabriel and Joseph Mancini, of the Traffic Dept. and Inventory respectively, on the deaths of both their mother and brother; and to Marie Leister on the death of her grandfather.