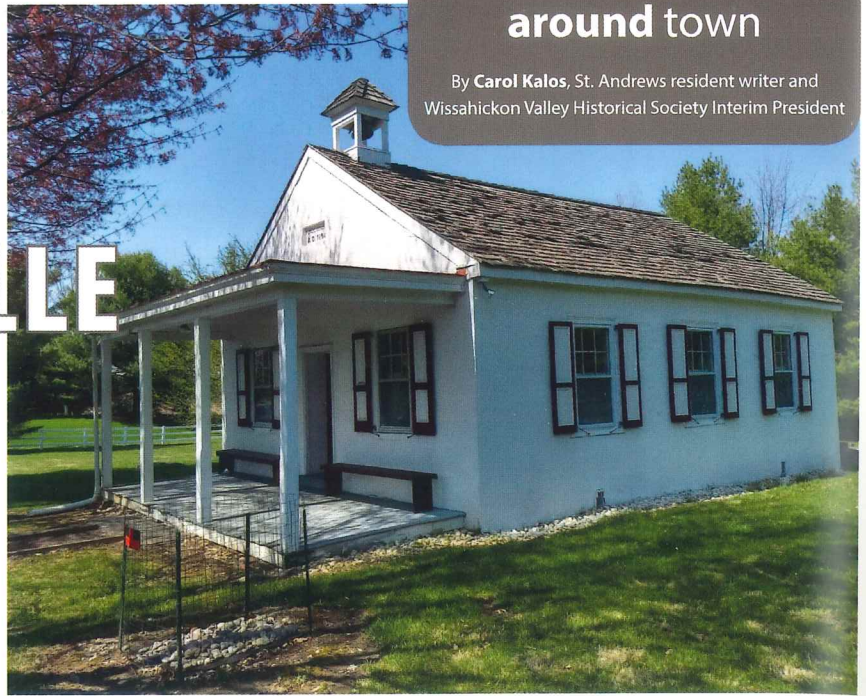


By **Carol Kalos**, St. Andrews resident writer and
Wissahickon Valley Historical Society Interim President

Amazing History Across the Street –

FRANKLINVILLE SCHOOL

Water Damaged, Desperate for Funding



The Franklinville School, owned by the Wissahickon Valley Historical Society and appearing on the National Register of Historic Places, is a one-room school, built in 1858 and located on Morris Road. The little building looks pristine standing across from Blue Bell Country Club, surrounded by its white rail fence. Its beauty enhances our community, and its programs teach us about education and local history from over a century ago.

However, the classroom has massive water issues! A large pond of water sits under the building (a sump pump is needed), and the porches and wiring are hazardous. The repairs will amount to thousands of dollars!

The historical society has received a grant, which will cover less than a third of the cost of total repairs. It is seeking donations,

individual or corporate, to be able to complete the work. For more information about the Franklinville School, or to donate, please see our website's homepage: www.wvalleyhs.org.

The story of the Franklinville School is amazing. (Bell Telephone puts in a phone line for one special event!)

The Wissahickon Valley Historical Society works to promote and preserve the history of Ambler Borough, Whitpain Township, and Lower Gwynedd Township. Its headquarters and museum are located on Skippack Pike and School Road at the Whitpain 1895 Public School. The society's interim president is Carol Kalos, who resides in Saint Andrews. She has been heading the campaign to save the Franklinville School, and she is planning more local history articles for future issues of Blue Bell's Finest.



PA056522

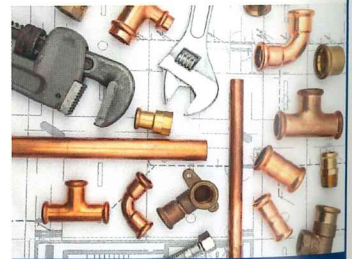
**Family Owned & Operated with
Over 45 years of Experience**

610-539-3626

dirosatoplg-htg.com



Residential & Commercial Plumbing



Water Heater Installation & Repair



Heat & AC



Bath & Kitchen Remodels