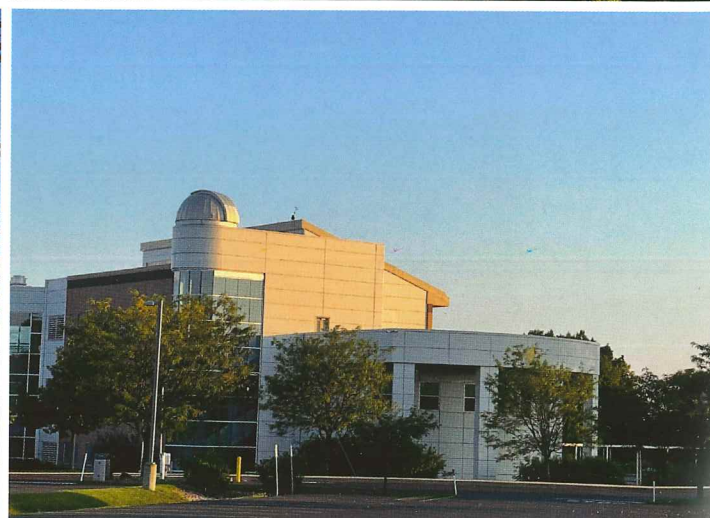
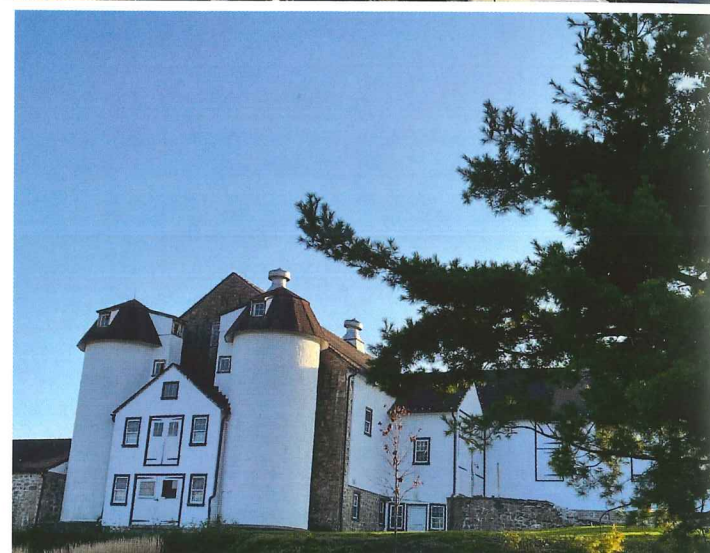
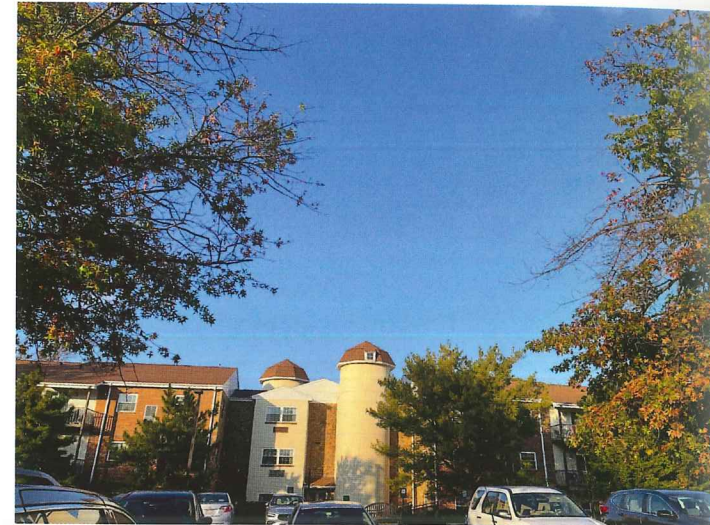


identify these silos

Crops and pastures once filled our neighborhood; long ago, Whitpain Township was primarily agricultural. Farming became more scientific in the 1800s – farmers learned to increase their cows' milk production by improving the cows' nutrition. They built silos to hold chopped grass and corn stalks, which they fed their cattle during the winter. Some of those silos still exist.

Today, architects copy the silo image, placing it on the front of nearby commercial properties to remind us of our area's heritage and beauty. Here are nine locations near Blue Bell Country Club with silos. Can you identify where they stand?

1. Normandy Farm Hotel and Conference Center's famous Triple Silos, now part of a ballroom [historic]
2. The Twin Silos, part of the historic barn, across Morris Road from Tournament Drive, at Normandy Farms Estates retirement community [historic]
3. One of two twin silos at the Normandy Farms Estates, at the main entrance [contemporary]
4. Twin Silos at the Normandy Farms Estates, at the apartments [contemporary]
5. Montgomery County Community College, the Advanced Technology Center, facing Morris Road [contemporary]
6. Montgomery County Community College, the Fine Arts Center, a renovated barn, facing Skippack Pike [historic]
7. Radice Restaurant (Village Square Shopping Center) 676-758 Dekalb Pike, [contemporary]
8. Castello Restaurante (Village Crossing in Blue Bell) 721 W. Skippack Pike [contemporary]
9. Merrymeade Farm, 2222 S. Valley Forge Road, Lansdale [contemporary]



Author Carol Kalos, a Saint Andrews resident, heads the Wissahickon Valley Historical Society, and she includes some local history in every issue of *Blue Bell's Finest*. Last month she described the famous silos at Normandy Farm Hotel and Conference Center, once home to the Franklinville School. On the National Register of Historic Places, the one-room school desperately needs a new roof and new porches, so donations are welcome. To join the historical society or learn more about the Franklinville School, see the website: www.WValleyHS.org.

